

Tender Heart High School, Sec-33B, Chandigarh

Class - V

Subject - Mathematics

Date - 17.02.2025

Teacher - Ms. Sushma

Revision Worksheet

Ch-13 Percentage

Q1. Write each of the following as percentage

(i) $\frac{88}{100}$

(ii) $\frac{24}{100}$

(iii) $\frac{32}{100}$

Q2. Express each of the following as a fraction with lowest form:-

(i) 18%

(ii) $14\frac{1}{2}\%$

(iii) 12.5%

Q3. Find the value of

(a) 30% of 20

(b) 7% of 320

Q4. The width of a room is 75% of the length of the room. If the length of the room is 18 m, how wide is the room?

Q5. In the word 'INDIA', what is the percentage of the vowels?

Q6. Fill in the blanks:-

(i) $\frac{65}{100} = \underline{\hspace{2cm}}\%$

(ii) 9% as a fraction = $\underline{\hspace{2cm}}$

(iii) How much is 8% of 1 kg? $\underline{\hspace{2cm}}$

Q7. Grandfather gave ₹500 to Aakash. Aakash spent ₹250 out of it. What percentage of money did he spend?

Ch-14 (Data Handling)

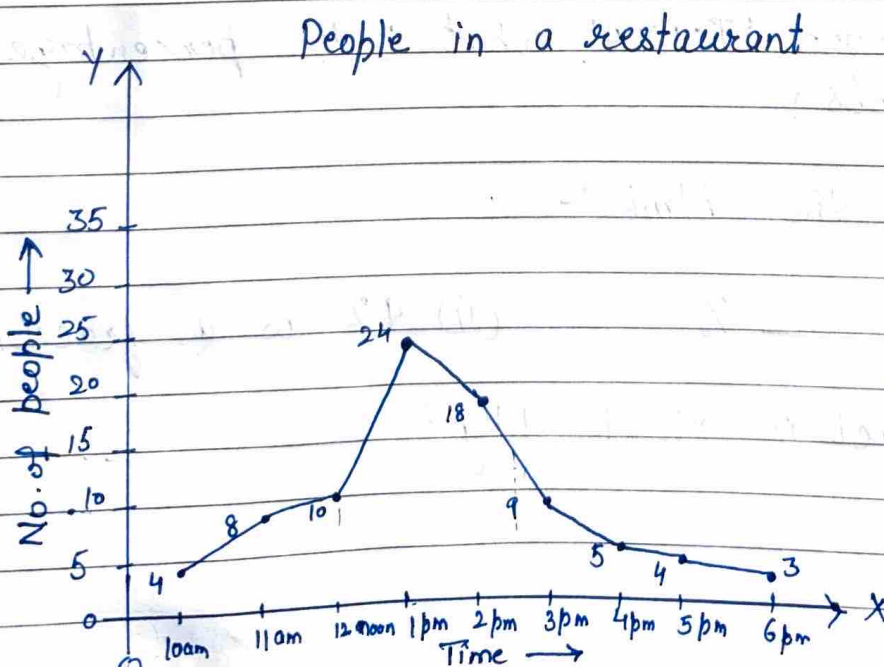
Q8. The given table shows the no. of bikes sold from a showroom in a week. Use a graph paper to draw the bar graph representing the data given below.

Days	Monday	Tuesday	Wednesday	Thursday	Fri	Saturday
No. of bikes sold.	16	25	12	17	34	21

Q9. The given table shows the no. of stories you read from your favourite storybook each day in a week. Represent the given data as a bar graph.

Days	Mon	Tues.	Wed	Thursday	Fri	Sat.	Sunday
No. of stories you read	12	8	2	4	8	10	6

Q10. The following line graph shows the no. of people in a restaurant at different times during a day. Look at the graph carefully and answer the questions given below the graph.



- (a) What is the line graph about?
- (b) What is the busiest time of day at the restaurant?
- (c) At what time does business start to slow down?
- (d) How many people are in the restaurant when it opens?
- (e) About how many people are in the restaurant at 2:30 p.m.?
- (f) What was the greatest no. of people in the restaurant?